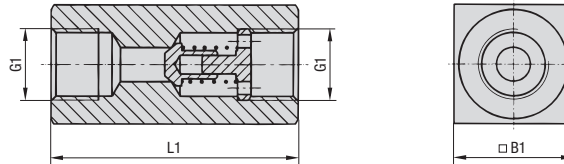
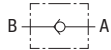


Heavy-Duty Check Valve - Type RV (In-Line Assembly)



Characteristics

Allows a single-directional flow only

Features

- Designed for in-line assembly with female BSP, NPT and SAE threaded connections
- Metal-to-metal seat

Media Compatibility

- Suitable for hydraulic fluids

Please contact STAUFF before using with other media.

Materials

- Body made of Steel (1.0715), zinc/iron-plated (Fe/Zn Fe Co 8 C) and free of hexavalent chromium CrVI (standard option); Stainless Steel (1.4571) version available

Technical Data

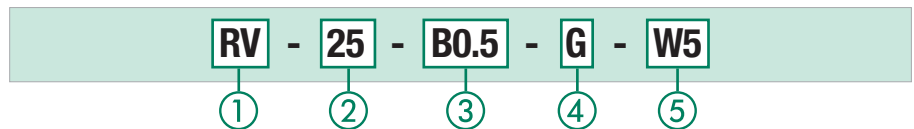
- Opening pressure: 0,5 bar / 7 PSI (4,5 bar / 65 PSI available on request)
- Maximum working pressure: 500 bar / 7250 PSI (depending on size)
- Operating temperature range: -20°C ... +100°C / -4°F ... +212°F

Please see page 100 for detailed flow characteristics.

Dimensions

Typ + Nominal Size	Thread Options G1	Dimensions (mm/in)			Working Pressure PN (bar/PSI)		Weight (kg/lbs)
		L1 only BSP / NPT	L1 only SAE	B1	Carbon Steel	Stainless Steel	
RV-06	G1/8 BSP 1/8 NPT	45	/	16	500	350	0,10
		1.77		.63	7250	5076	.22
RV-08	G1/4 BSP 1/4 NPT 7/16-20 UNF (1/4" SAE)	55	54,5	25	500	350	0,20
		2.17	2.15	.98	7250	5076	.44
RV-10	G3/8 BSP 3/8 NPT 9/16-18 UNF (3/8" SAE)	65	65	30	500	350	0,40
		2.56	2.56	1.18	7250	5076	.88
RV-12	G1/2 BSP 1/2 NPT 3/4-16 UNF (1/2" SAE)	73	73	35	500	350	0,70
		2.87	2.87	1.38	7250	5076	1.54
RV-16	G3/4 BSP 3/4 NPT 1-1/16-12 UN (3/4" SAE)	88	97,5	45	500	350	1,20
		3.46	3.84	1.77	7250	5076	2.64
RV-20	G1 BSP 1 NPT 1-5/16-12 UN (1" SAE)	127	127,5	50	500	350	2,00
		5.00	5.02	1.97	7250	5076	4.40
RV-25	G1-1/4 BSP 1-1/4 NPT 1-5/8-12 UN (1-1/4" SAE)	143	141,5	60	400	350	3,30
		5.63	5.57	2.36	5800	5076	7.26
RV-30	G1-1/2 BSP 1-1/2 NPT 1-7/8-12 UN (1-1/2" SAE)	143	139,5	70	350	350	4,20
		5.63	54.92	2.75	5000	5076	9.24
RV-40	G2 BSP 2 NPT 2-1/2-12 UN (2" SAE)	165	165	90	350	350	7,20
		6.49	6.50	3.54	5000	5076	15.84

Order Codes



① Type

Heavy-Duty Check Valve (In-Line Assembly) **RV**

② Nominal Size DN

06 08 10 12 16 20 25 30 40

③ Opening Pressure

0,5 bar / 7 PSI (standard option) **B0.5**
4,5 bar / 65 PSI **B4.5**

Contact STAUFF for alternative opening pressures.

④ Connection

Female BSP thread (ISO 228) **G**
Female NPT thread (ANSI B1.20.1) **N**
Female UN/UNF thread (SAE J514) **U**

⑤ Body Material

Steel, zinc/iron-plated (standard option) **—**
Stainless Steel **W5**

